

Ki-Ra-Ri

The 4th Regular Concert
Okayama Civichall Brass

Flute

作曲: 妹尾 美穂
編曲: Ricky

Intro. **A**

B

C

D

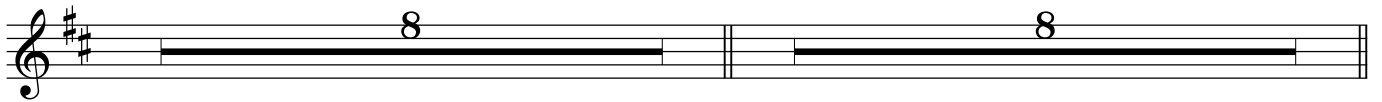
E

F

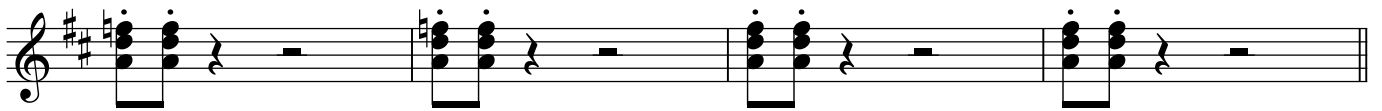
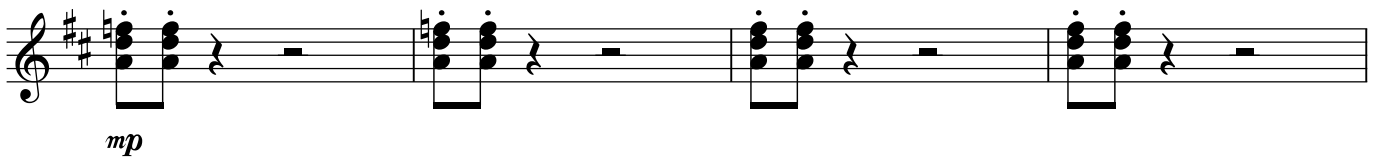
G **H**

Ki-Ra-Ri

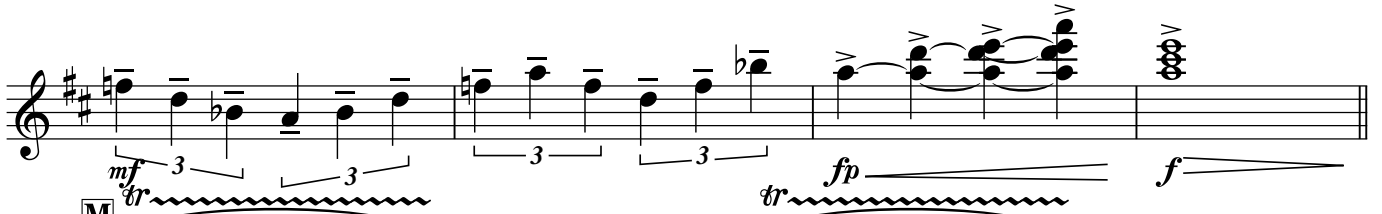
I



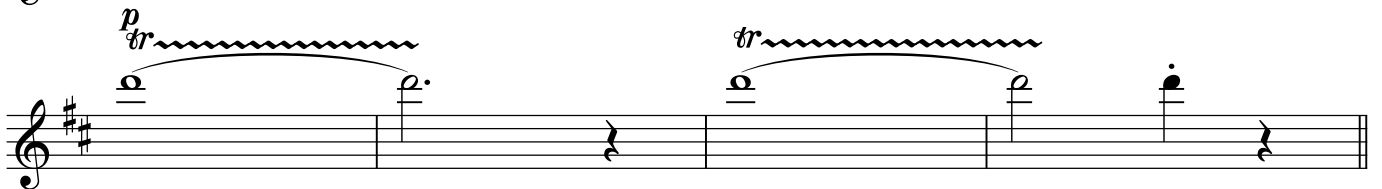
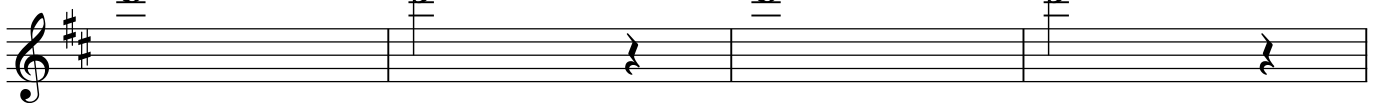
K



L



M

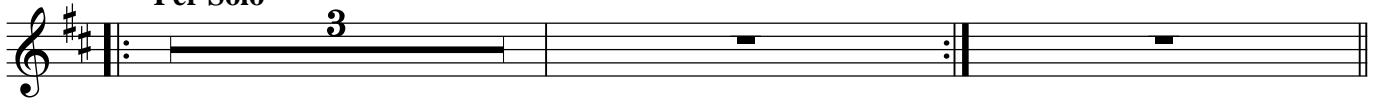


N

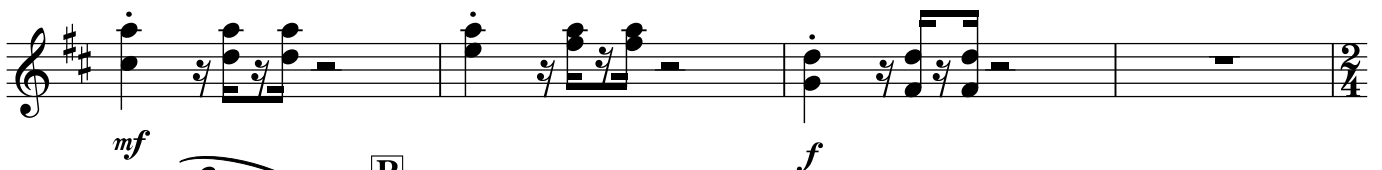
Per Solo

. X-Time

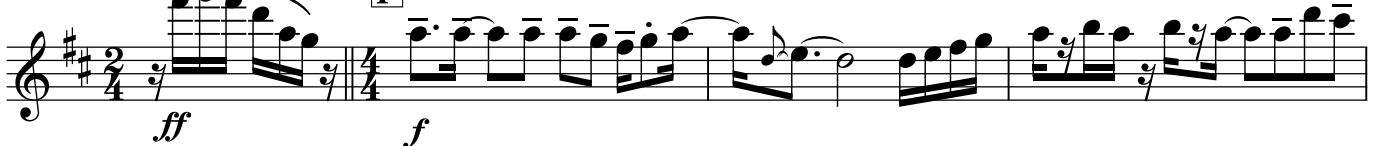
. Last Time



O



P



Ki-Ra-Ri

A musical staff in treble clef with a key signature of two sharps (F# and C#). The staff contains a series of notes with various rhythmic values and accents (^). The notes are: quarter notes (F#, G, A, B, C), eighth notes (D, E, F#, G, A, B, C), and quarter notes (D, E, F#, G, A, B, C). There are also some rests and a final chord consisting of F#, C#, and G.

A musical staff in treble clef with a key signature of two sharps. It begins with a 7-measure rest, followed by another 7-measure rest, and then a melodic line starting with a half note (F#) and followed by eighth notes (G, A, B, C, D, E, F#, G, A, B, C). The dynamic marking *mf* is placed below the staff.

A musical staff in treble clef with a key signature of two sharps. It begins with a 7-measure rest, followed by a melodic line starting with a half note (F#) and followed by eighth notes (G, A, B, C, D, E, F#, G, A, B, C). The dynamic marking *f* is placed below the staff.

A musical staff in treble clef with a key signature of two sharps. The staff contains a series of notes with various rhythmic values and accents (^). The notes are: quarter notes (F#, G, A, B, C), eighth notes (D, E, F#, G, A, B, C), and quarter notes (D, E, F#, G, A, B, C). There are also some rests and a final chord consisting of F#, C#, and G.

Ending

A musical staff in treble clef with a key signature of two sharps. It begins with a half note (F#), followed by a 7-measure rest, and then a final chord consisting of F#, C#, and G.